

Montclair BOE

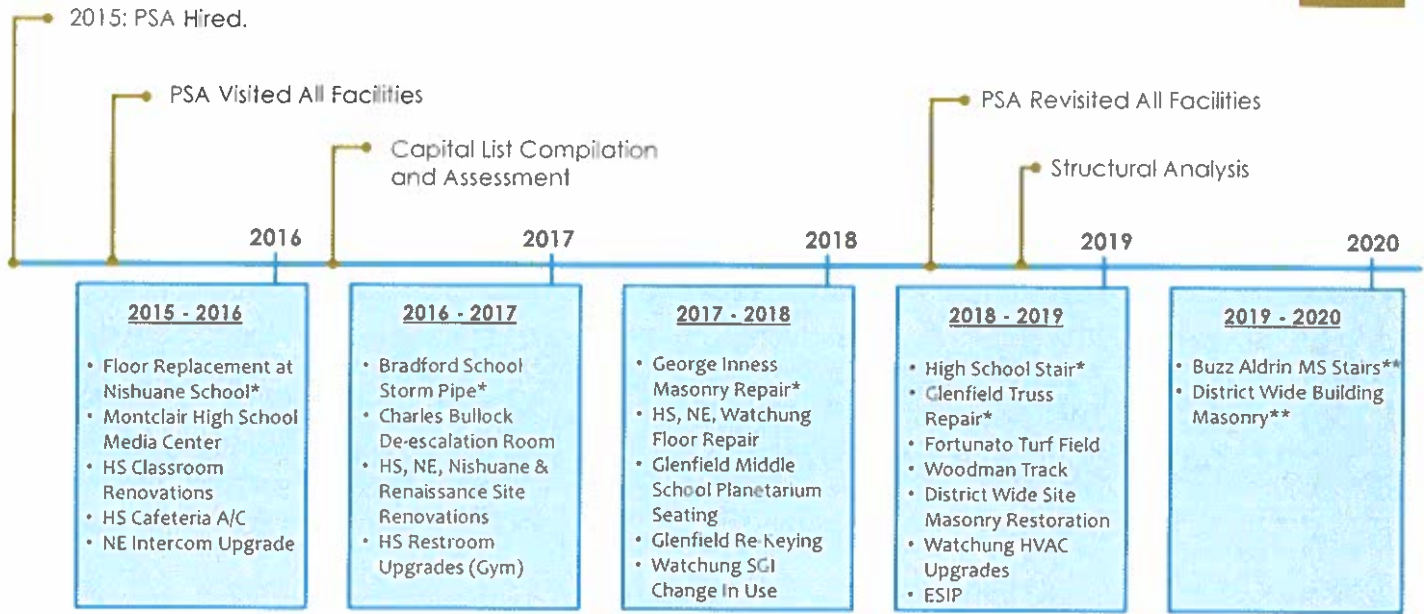


District Wide Improvements

AGENDA

- Montclair BOE & PSA Completed Projects Timeline
- Active Projects
- District Wide Building Masonry Improvements

Montclair BOE & PSA Timeline



Not all projects included.

*Emergent Project

**Priority Project

MONTCLAIR HIGH SCHOOL

Toilet Renovations



MONTCLAIR HIGH SCHOOL

Paving



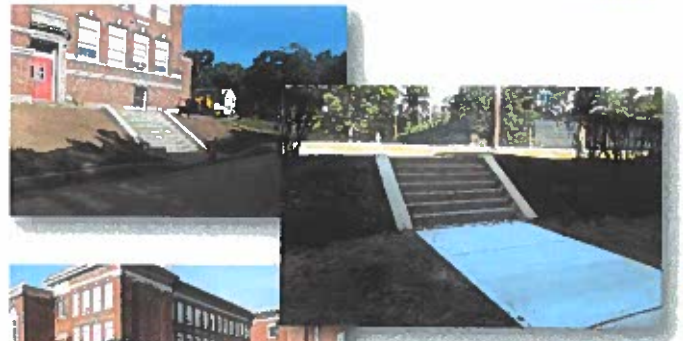
MONTCLAIR HIGH SCHOOL

Stair Replacement



NISHUANE ELEMENTARY SCHOOL

Paving



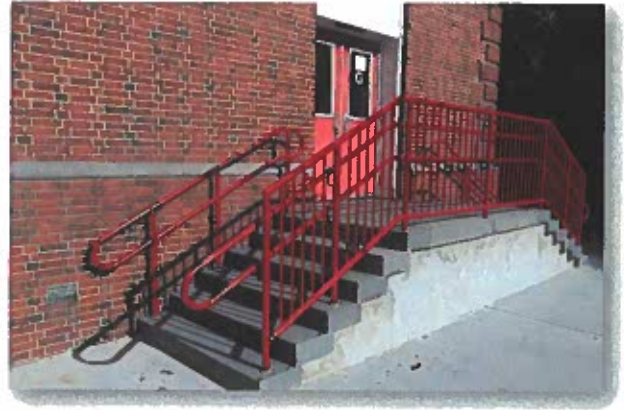
GLENFIELD MIDDLE SCHOOL

Truss Repair



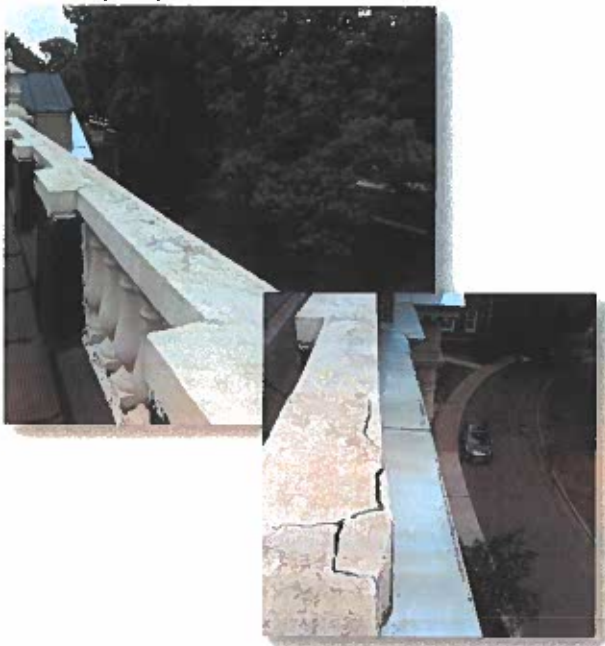
EDGEMONT ELEMENTARY SCHOOL

Exterior Stair Reconstruction



GEORGE INNESS ANNEX

Masonry Repair & Restoration



WATCHUNG ELEMENTARY SCHOOL

Exterior Stair Reconstruction



FORTUNATO FIELD

Turf Replacement



WOODMAN FIELD

Track Replacement



ACTIVE PROJECTS

- District Wide Site Masonry Improvements
- Energy Savings Improvement Program (ESIP)
- In Development:
 - Nishuane Chair Lift Replacement
 - Edgemont School Chair Lift Replacement
 - Glenfield School Attic Insulation
 - Buzz Aldrin Middle School Stair Replacement

DISTRICT WIDE SITE MASONRY IMPROVEMENTS

EDGEMONT SCHOOL



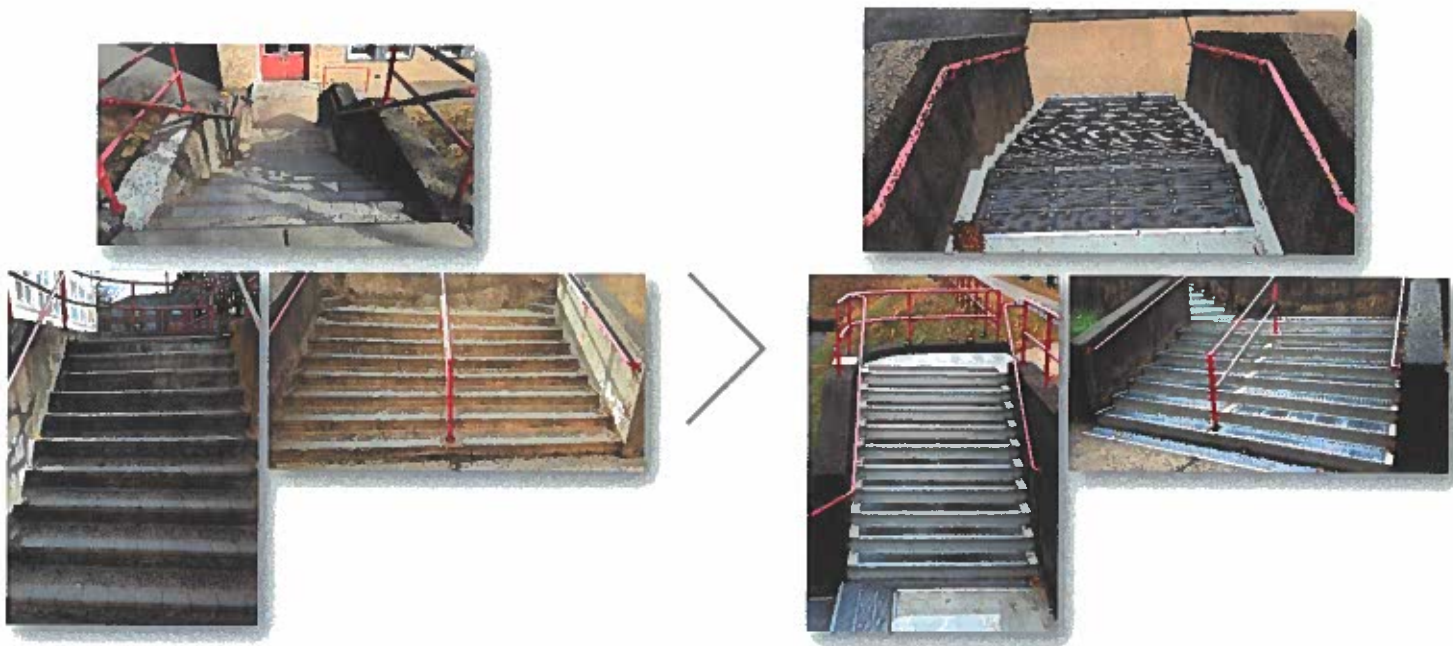
DISTRICT WIDE SITE MASONRY IMPROVEMENTS

RENAISSANCE AT RAND MIDDLE SCHOOL



DISTRICT WIDE SITE MASONRY IMPROVEMENTS

HILLSIDE ELEMENTARY SCHOOL



BUZZ ALDRIN MIDDLE SCHOOL

Stair Replacement (In Development - Summer 2020 Construction)

FUTURE VISION & INITIATIVES:



PSA reported on potential concerns regarding these stairs per the draft structural analysis issued on January 8, 2019, and included in the final report dated May 29, 2019.

The District brought to PSA's attention concerns regarding these stairs on November 25, 2019.

PSA further investigated the conditions. This involved destructive investigation not previously conducted.

Treads were demolished to reveal concealed spaces and hidden conditions.

Since investigations, PSA has been in process of developing construction drawings to replace these stairs.

GEORGE INNESS ANNEX

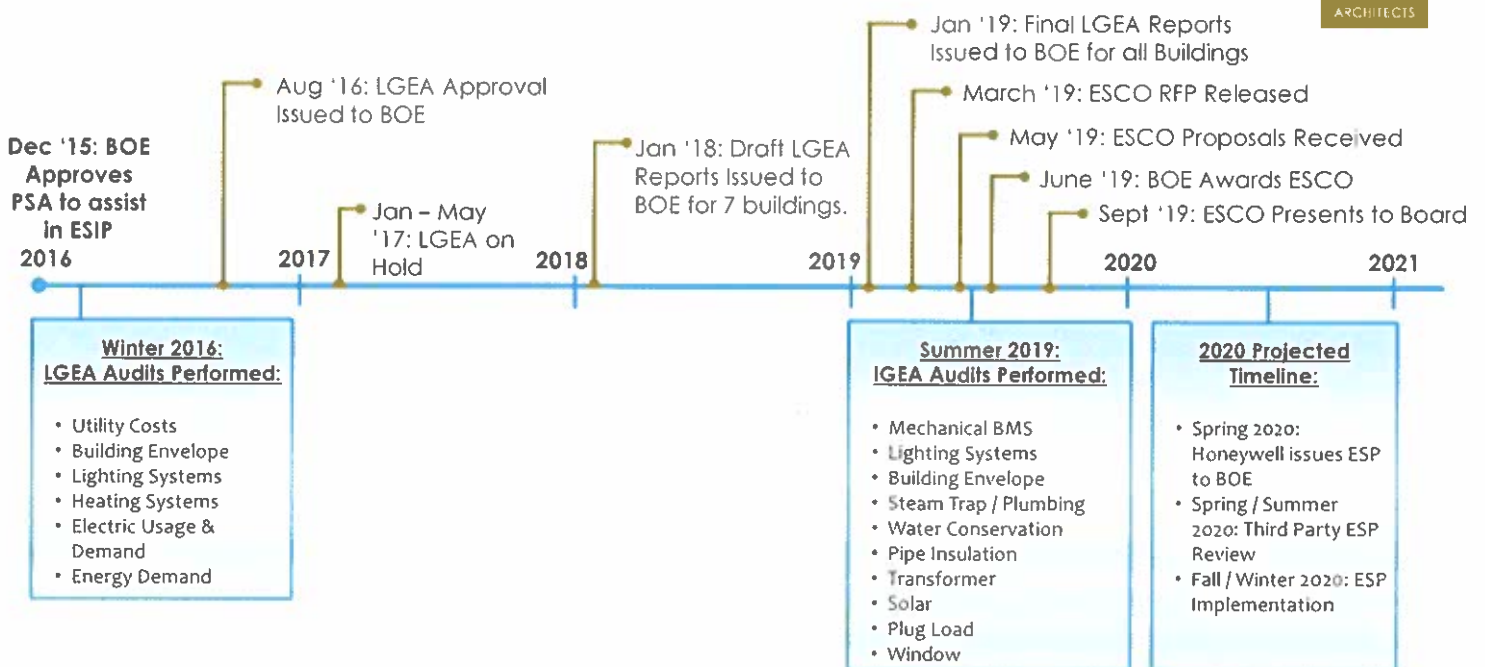
Stair Replacement (Priority for Future Project)

FUTURE VISION & INITIATIVES:



- PSA reported on a number of visible concerns regarding these stairs per the draft structural analysis issued on January 25, 2019. (Final report was issued May 29, 2019.)
- The District brought to PSA's attention concerns regarding concealed portions of these stairs on December 17, 2019.
- After walls were opened to reveal concealed spaces, PSA further investigated the conditions. This required destructive investigation not previously conducted.
- Since these investigations, PSA awaits direction on how to proceed.

ENERGY SAVINGS IMPROVEMENTS PROGRAM (ESIP)



DISTRICT WIDE BUILDING MASONRY IMPROVEMENTS

BUILDING MASONRY-BACKGROUND & HISTORY

Buzz Aldrin Cornice

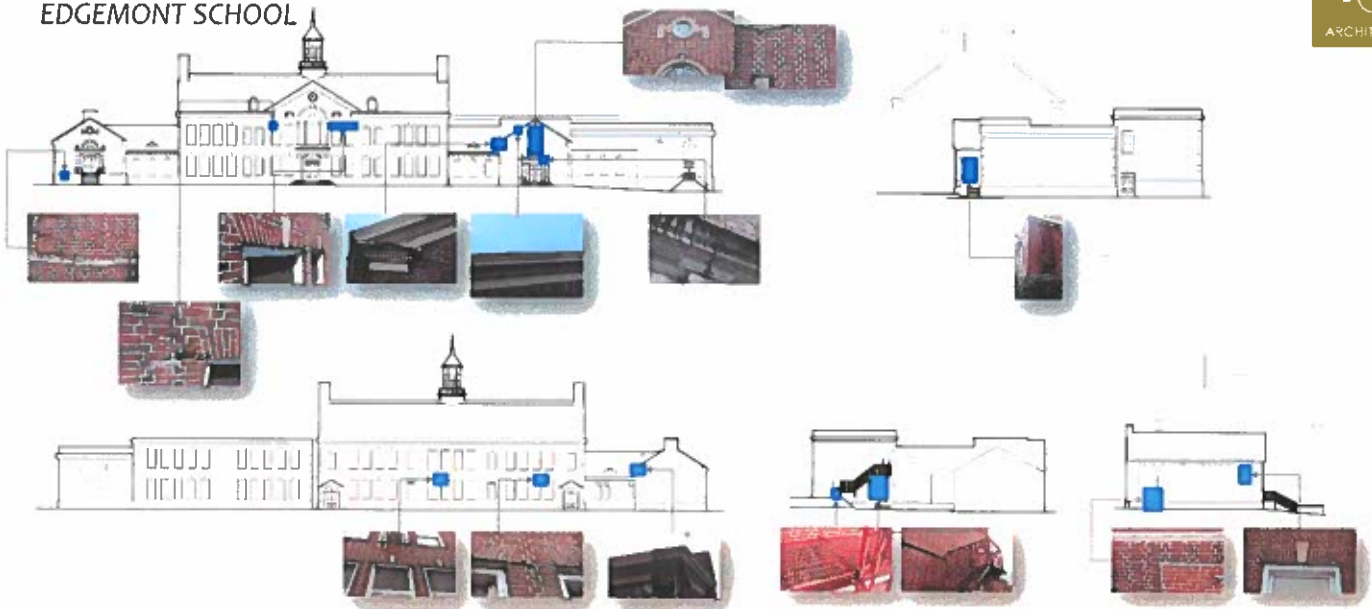


BUILDING MASONRY-PROJECT SCOPE

ADMINISTRATION BUILDING:	Masonry restoration to brownstone base and window sills, and brick repointing.
BRADFORD ELEMENTARY SCHOOL:	Masonry restoration and waterproofing at cast stone/limestone, repair of brick chimneys, and metal coping installation.
BUZZ ALDRIN MIDDLE SCHOOL:	Masonry restoration and water proofing, lintel replacement, and metal coping replacement.
CENTRAL HEATING PLANT/COAL BUNKER:	Masonry restoration/brick repointing and waterproofing, and structural repairs to former coal bunker structure.
CHARLES H. BULLOCK:	Repointing to cast stone pilasters and wall panels.
EDGEMONT ELEMENTARY SCHOOL:	Cornice Repair, lintel replacement, and barrier free ramp repairs.
GEORGE INNES ANNEX:	Cast stone masonry repair, lintel replacement, and concrete slab repairs at "Little Theater."
GLENFIELD MIDDLE SCHOOL:	Cupola restoration, brick repointing, and lintel replacement.
HILLSIDE ELEMENTARY SCHOOL:	Brick masonry repointing, and lintel replacement.
MONTCLAIR HIGH SCHOOL:	Masonry restoration and waterproofing, parapet masonry and metal coping repairs, and repair Wood Shop concrete floor slab.
NISHUANE ELEMENTARY SCHOOL:	Cornice restoration and waterproofing, brick masonry, repointing, and lintel replacement.
NORTHEAST ELEMENTARY SCHOOL:	Masonry restoration and repointing, ashlar stonework repairs, lintel replacement, and metal coping on parapet replacement.
MONTCLAIR COMMUNITY PRE-K:	Miscellaneous masonry restoration, brick repointing, waterproofing, and lintel replacement.
RENAISSANCE AT RAND:	Miscellaneous masonry restoration, brick repointing, waterproofing, and lintel replacement.
WATCHUNG ELEMENTARY SCHOOL:	Metal coping and repointing at parapet walls, and lintel replacement.

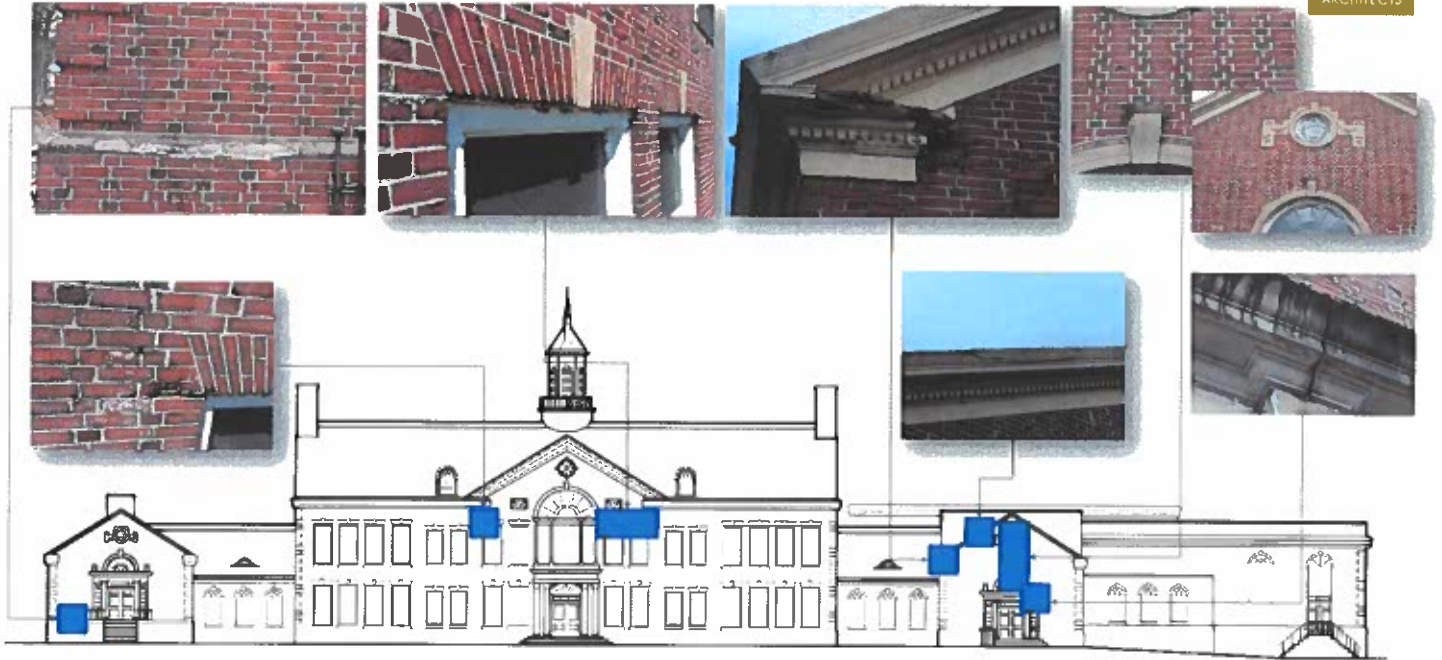
BUILDING MASONRY - INVESTIGATIONS

EDGEMONT SCHOOL



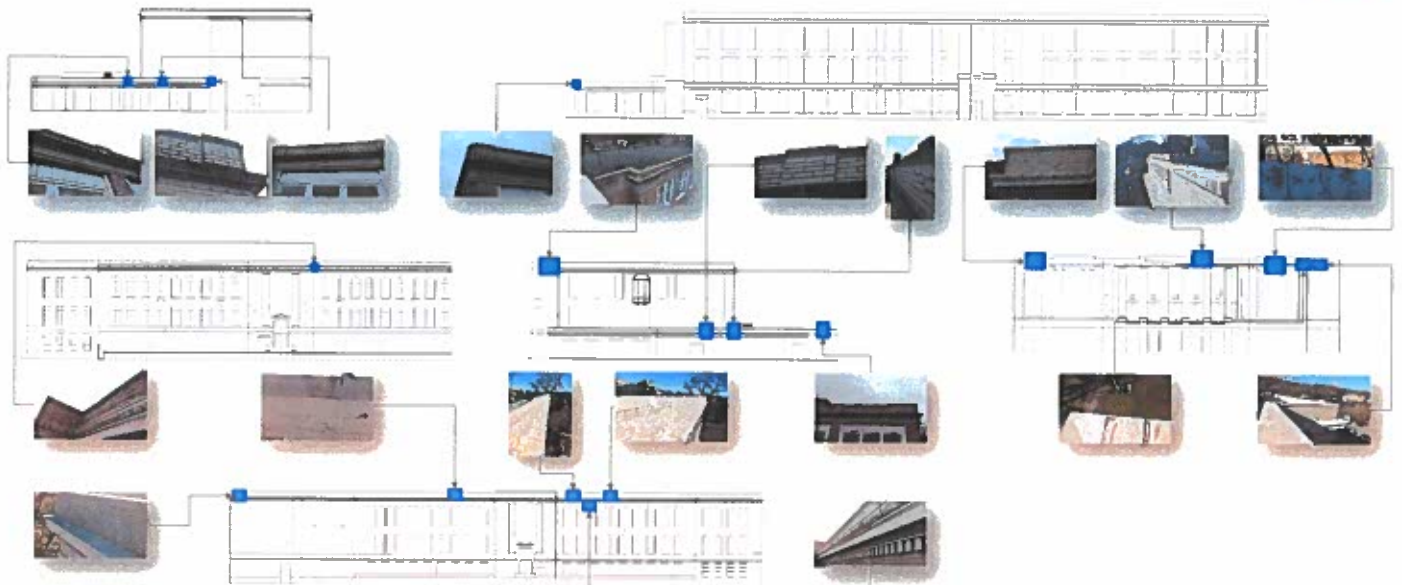
BUILDING MASONRY - INVESTIGATIONS

EDGEMONT SCHOOL



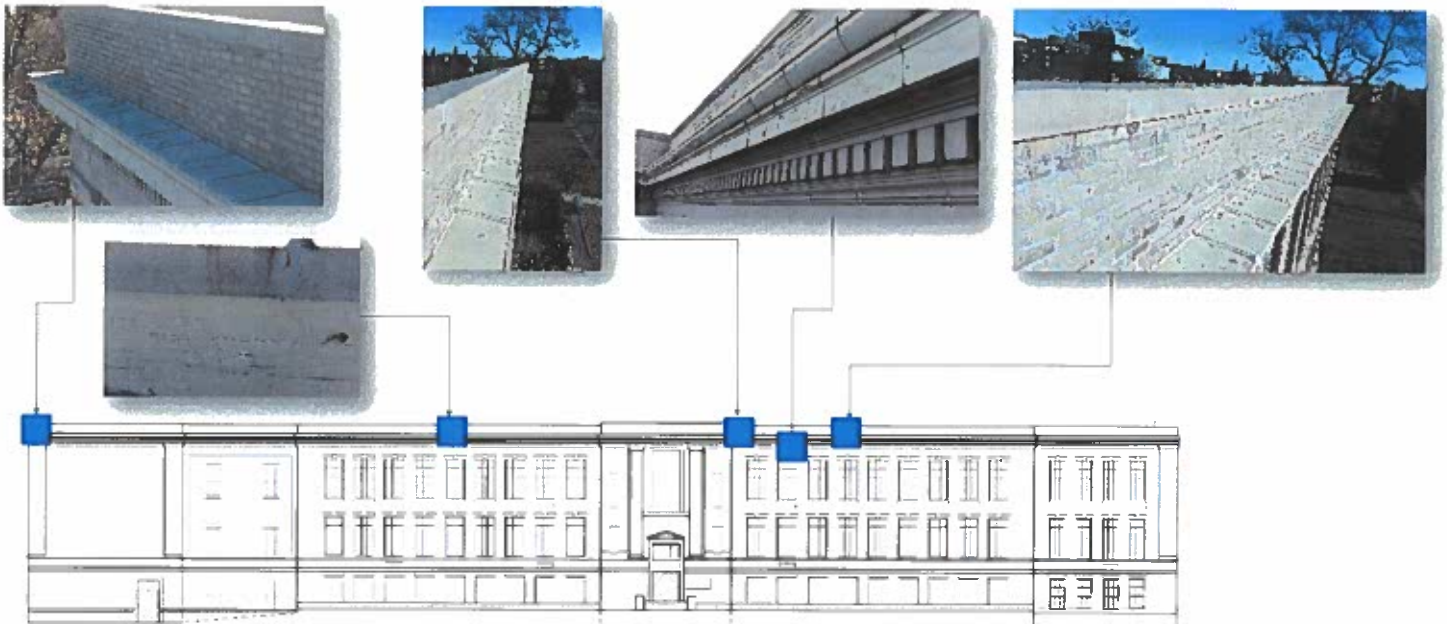
BUILDING MASONRY- INVESTIGATIONS

HILLSIDE ELEMENTARY SCHOOL



BUILDING MASONRY- INVESTIGATIONS

HILLSIDE ELEMENTARY SCHOOL



BUILDING MASONRY-NEXT STEPS

BUDGET	TBD
COMPLETE EXISTING CONDITIONS DRAWINGS	January 2020
CONSTRUCTION DOCUMENTS	April to June 2020
BIDDING	July 2020
CONSTRUCTION	Summer 2020/ Fall 2020 to Fall 2021

THANK YOU